

Washington County, MS: Hard To Count Census Tracts + Federal Grant Dollars Sensitive to Census Count



The Census Bureau counts the people every 10 years. The next Census count is 2010. In some counties it is harder to count the people because some people are afraid to provide information to census workers, some census workers are afraid to talk with people in their neighborhoods, and some people in rural communities live in hard to find locations.

The Census Bureau has provided data to show in which areas people have been hard to count. This data is shown by Census Tracts within each county. The Census Bureau ranks each Census Tract on a scale from 0 to 125. The Census Bureau uses 12 factors to set a score for each Tract. The MEAN number is 32.8. The MEAN is the AVERAGE score for all census tracts in the US. The Census Bureau regards all census tracts that score 60 or above as HARD TO COUNT.

The map uses 3 color codes to identify the scoring range for each Census Tract. CREAM color represents the lowest range and is below the MEAN. GREEN color represents the mid-range and is above the MEAN. RED color is the highest range above the MEAN and represents the HARD-TO-COUNT tracts.

Every year the US Government provides to states, counties and municipalities grant funds that are allocated on the basis of the census count. When there is an undercount communities lose funds to which they are entitled. In 2007 Washington County received in federal grants \$113,843,578. For more information about these grants follow this link to the US Census Bureau Consolidated Federal Funds Report: harvester.census.gov/cffr/asp/GeographyB.asp

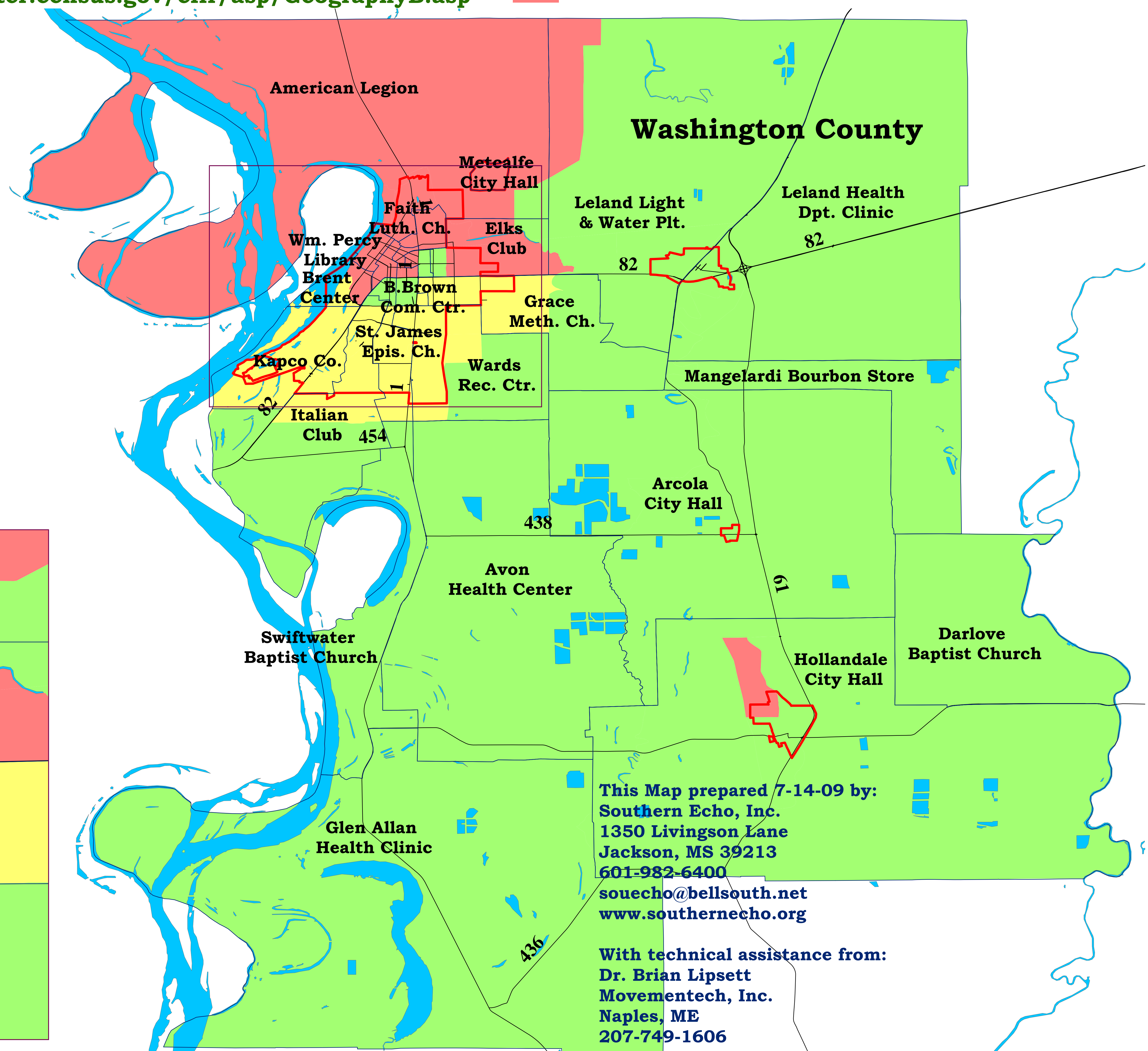
Legend

- Washington Precincts
- Washington County places

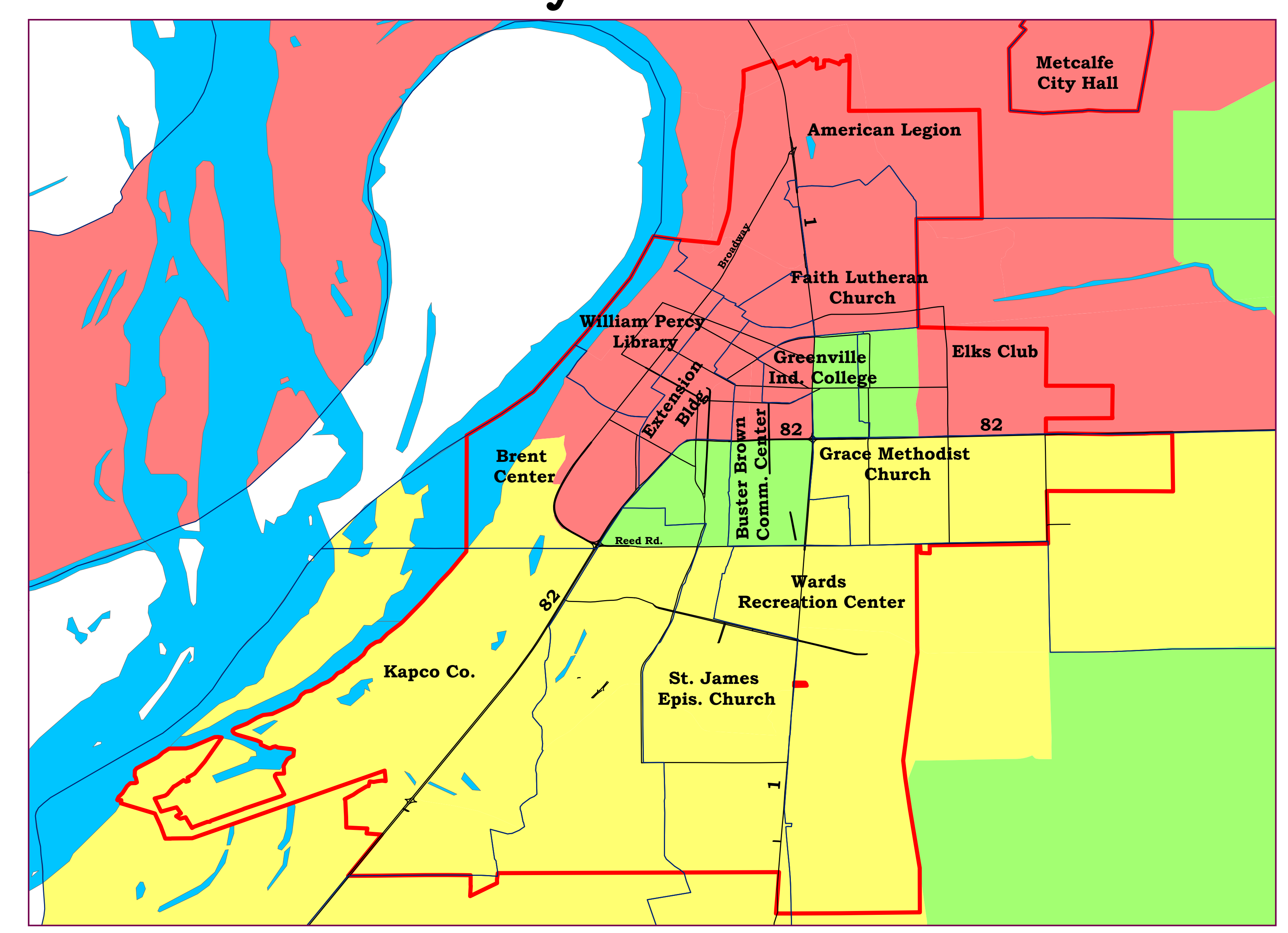
Hard To Count Scores by Census Tracts

- 17 - 32 - Below the MEAN
- 33 - 59 - Above the MEAN
- 60 - 125 - HARD TO COUNT

Washington County is in the 2nd Congressional District represented by Cong. Bennie G. Thompson (Dem.)



Inset: City of Greenville



This Map prepared 7-14-09 by:
Southern Echo, Inc.
 1350 Livingston Lane
 Jackson, MS 39213
 601-982-6400
souecho@bellsouth.net
www.southernecho.org

With technical assistance from:
Dr. Brian Lipsett
 Movementech, Inc.
 Naples, ME
 207-749-1606