

Jackson, MS Public School District 2011-2012 MDE Letter Grades

Presented by School and Percent Family Poverty by Census Block Group

This map shows the schools in the City of Jackson, MS Public School District. The school symbols are:

TRIANGLES = Elementary Schools
 SQUARES = Middle Schools
 CIRCLES = High Schools.

The school symbols are color coded to show the letter grade for each school.

RED = F
 ORANGE = D
 YELLOW = C
 BLUE = B
 GREEN = A

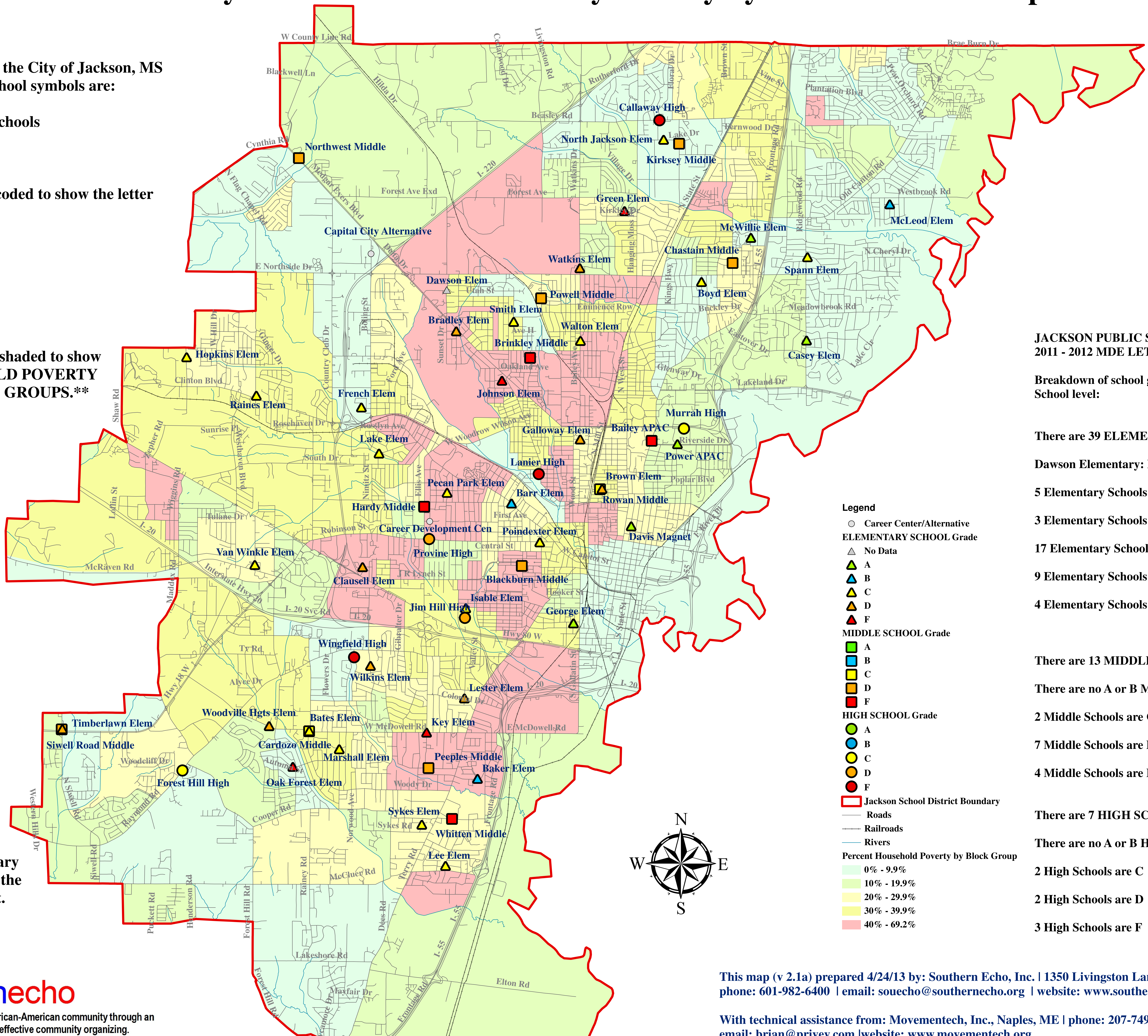
The map background is color-shaded to show the percentage of HOUSEHOLD POVERTY by 2010 US CENSUS BLOCK GROUPS.**

PINK = 40 to 70%
 ORANGE = 30 to 39.9%
 YELLOW = 20 to 29.9%
 GREEN = 10 to 19.9%
 BLUE = 0 to 9.9%

The data used in this map includes school Letter Grades from the MS Dept of Education

Household Poverty Level Data is derived from the US Census Bureau's 2007 - 2011 American Community Survey Data Sample. **

** NOTE: The boundary of the Jackson School District and the boundary of the 2010 Census Block Groups on the edges of the district do not precisely correspond. As a result, the population in some block groups along the boundary includes persons from outside the Jackson Public School District.



JACKSON PUBLIC SCHOOL DISTRICT
 2011 - 2012 MDE LETTER GRADE = D

Breakdown of school grades by School level:

There are 39 ELEMENTARY SCHOOLS

Dawson Elementary: No assigned grade

5 Elementary Schools are A

3 Elementary Schools are B

17 Elementary Schools are C

9 Elementary Schools are D

4 Elementary Schools are F

There are 13 MIDDLE SCHOOLS

There are no A or B Middle Schools

2 Middle Schools are C

7 Middle Schools are D

4 Middle Schools are F

There are 7 HIGH SCHOOLS

There are no A or B High Schools

2 High Schools are C

2 High Schools are D

3 High Schools are F

- Legend**
- Career Center/Alternative
 - ELEMENTARY SCHOOL Grade**
 - △ No Data
 - ▲ A
 - ▲ B
 - ▲ C
 - ▲ D
 - ▲ F
 - MIDDLE SCHOOL Grade**
 - A
 - B
 - C
 - D
 - F
 - HIGH SCHOOL Grade**
 - A
 - B
 - C
 - D
 - F
 - ▭ Jackson School District Boundary
 - Roads
 - Railroads
 - Rivers
 - Percent Household Poverty by Block Group**
 - 0% - 9.9%
 - 10% - 19.9%
 - 20% - 29.9%
 - 30% - 39.9%
 - 40% - 69.2%