

State of LOUISIANA: WHY AN ACCURATE CENSUS COUNT MATTERS!

HARD-TO-COUNT CENSUS TRACTS:

The Census Bureau counts the people every 10 years. The next Census count is 2010. In some counties it is harder to count the people because some people are afraid to provide information to census workers, some census workers are afraid to talk with people in their neighborhoods, and some people in rural communities live in hard to find locations.

The Census Bureau has provided data to show in which areas people have been hard to count. This data is shown by Census Tracts within each county. The Census Bureau ranks each Census Tract on a scale from 0 to 125. The Census Bureau uses 12 factors to set a score for each Tract. The MEAN number is 32.8. The MEAN is the AVERAGE score for all census tracts in the US. The Census Bureau regards all census tracts that score 60 or above as HARD TO COUNT.

The map uses 3 color codes to identify the scoring range for each Census Tract. The CREAM color is the lowest range and below the MEAN. The GREEN color is the mid-range and above the MEAN. RED represents the highest range above the MEAN and represents the HARD-TO-COUNT tracts.

ALLOCATION OF FEDERAL GRANTS:

Every year the US Government provides to states, counties and municipalities grant funds that are allocated on the basis of and sensitive to the census count. When there is an undercount communities lose funds to which they are entitled. In 2007 the State of Louisiana received in federal grants \$14.6 billion.

The number in each county represents the total amount of federal grant funds allocated to that county in 2007. The amount is in MILLIONS of dollars and is rounded to one decimal place. For complete state data use this link to the Consolidated Federal Funds Report on the US Census Bureau website: harvester.census.gov/cffr/asp/Geography.asp

CONGRESSIONAL REPRESENTATION:

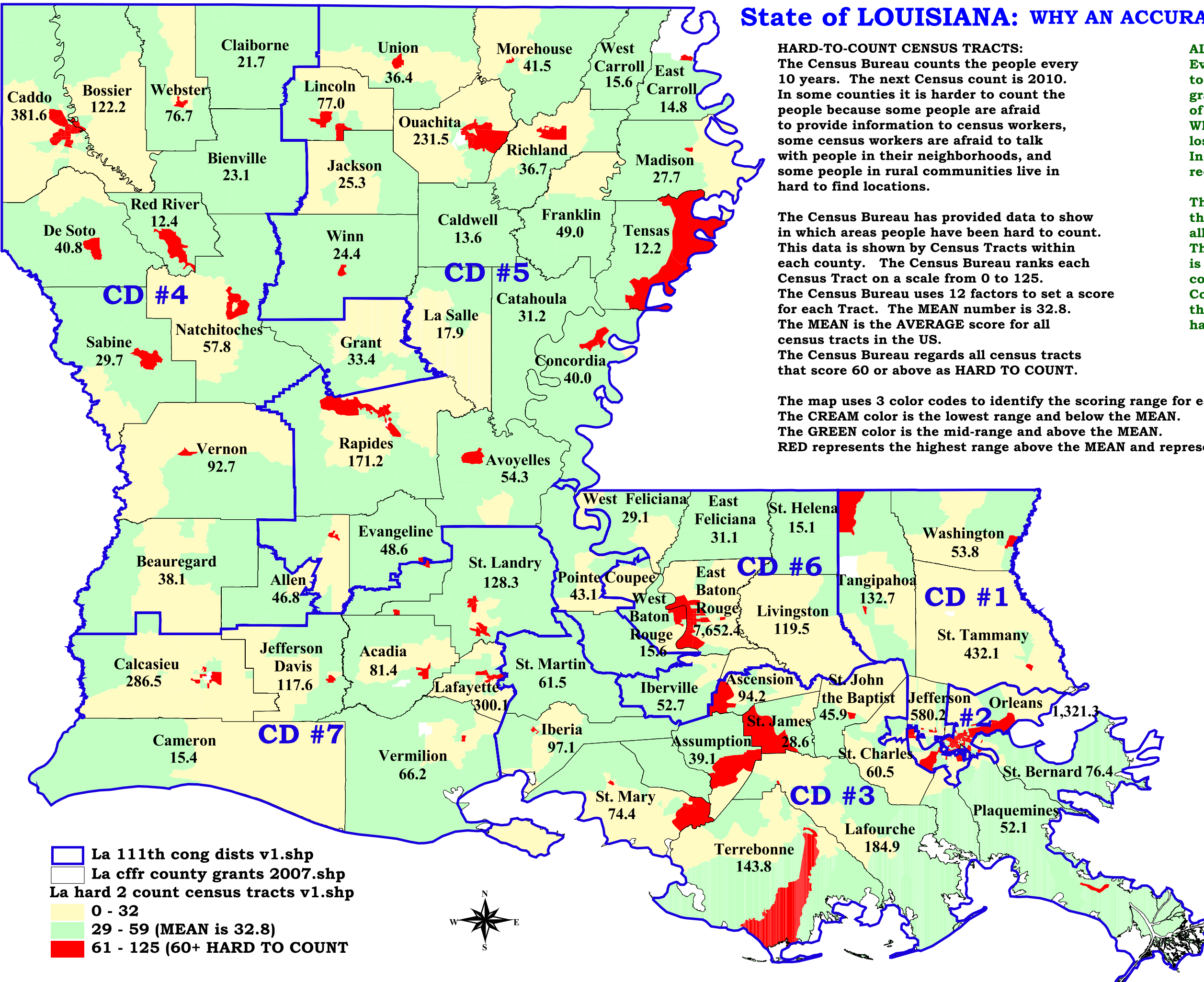
After the 2000 Census the US Congress was reapportioned. Louisiana now has 7 Congressional Districts, which are outlined in BLUE on the map.

Louisiana's Representatives are:

- Dist. 1: Steve Scalise (Rep.)
- Dist. 2: Anh Cao (Rep.)
- Dist. 3: Charlie Melancon (Dem.)
- Dist. 4: Jim McCrery (Rep.)
- Dist. 5: Rodney Alexander (Rep.)
- Dist. 6: Bill Cassidy (Rep.)
- Dist. 7: Charles Boustany, Jr. (Rep.)

This Map prepared 6-20-09 by:
Southern Echo, Inc.
1350 Livingston Lane
Jackson, MS 39213
601-982-6400
souecho@bellsouth.net
www.southernecho.org

With technical assistance from:
Dr. Brian Lipsett, PhD
Movementech, Inc.
Naples, ME
207-749-1606



- La 11th cong dists v1.shp
- La cffr county grants 2007.shp
- La hard 2 count census tracts v1.shp
- 0 - 32
- 29 - 59 (MEAN is 32.8)
- 61 - 125 (60+ HARD TO COUNT)

