

2013 Mississippi Statewide Accountability System Results – Final

Districts

Label	Number			Percentage		
	2013	2012	2011	2013	2012	2011
A	18	3	4	12%	2%	3%
B	42	47	28	28%	31%	19%
C	37	42	50	24%	28%	33%
D	36	37	43	24%	24%	28%
F	15	20	27	10%	13%	17%
NA – Excellence for All Pilot	3	3	N/A	2%	2%	
Total	151	152	152	100%	100%	100%
C and Above	97	92	82	64%	61%	54%

Schools

Label	Number			Percentage		
	2013	2012	2011	2013	2012	2011
A	109	80	65	14%	10%	8%
B	218	213	181	27%	26%	23%
C	228	216	231	28%	27%	29%
D	142	177	189	18%	22%	23%
F	92	107	140	11%	11%	17%
NA – Excellence for All Pilot	13	13	N/A	2%	2%	
Total	802	806	806	100%	100%	100%
C and Above	555	509	477	69%	63%	59%

Comparison of District Annual Growth Status

	2013		2012		2011	
	Number	Percent	Number	Percent	Number	Percent
Met Growth	104	70%	104	70%	90	59%

2013	Growth Not Met		Growth Met	
QDI	Number	Percent	Number	Percent
200-300	0	0%	9	6%
166-199	0	0%	51	34%
133-165	28	19%	37	25%
100-132	15	10%	7	5%
0-99	1	1%	0	0%
Totals	44	30%	104	70%

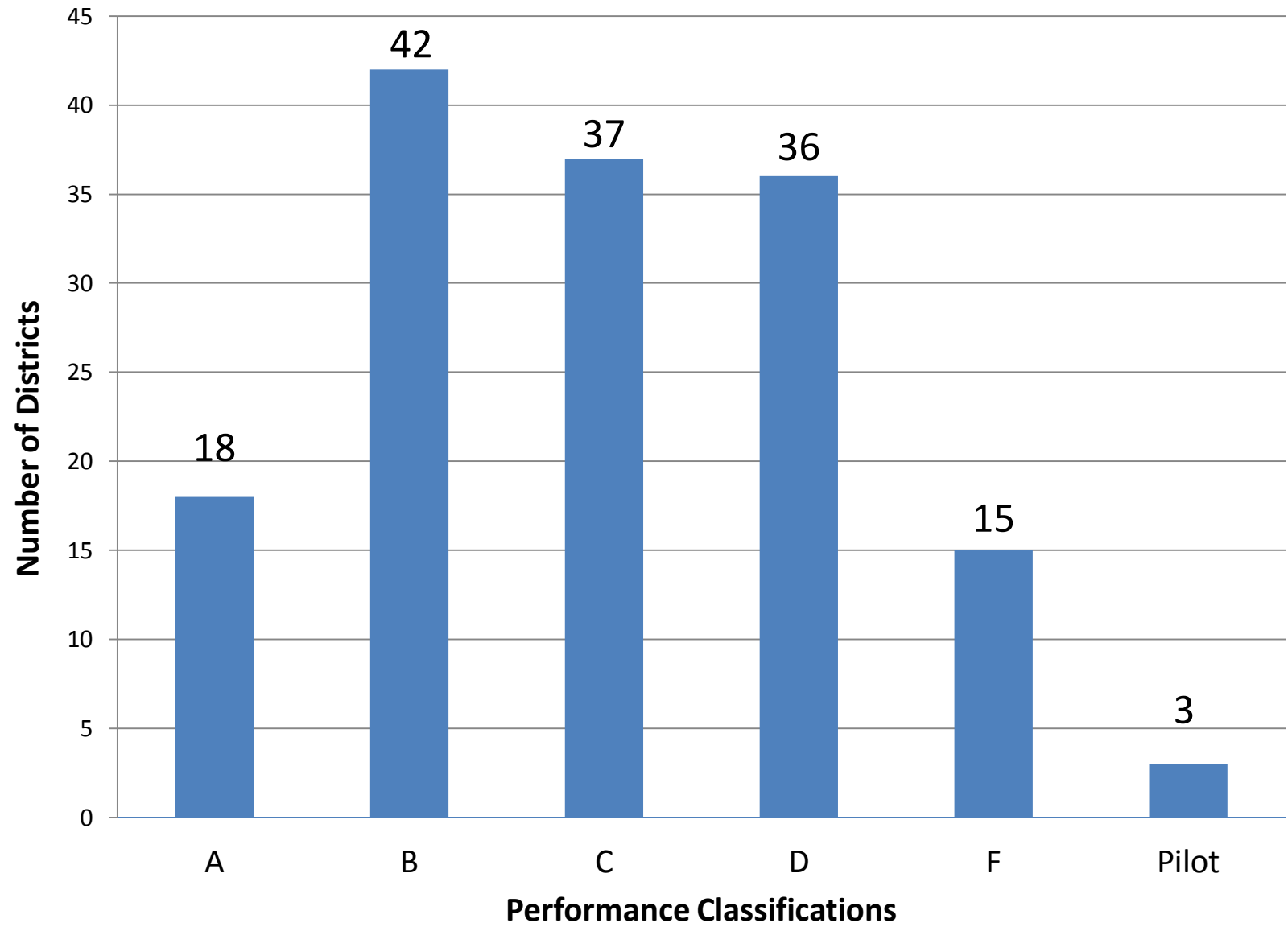
Comparison of School Annual Growth Status

	2013		2012		2011	
	Number	Percent	Number	Percent	Number	Percent
Met Growth	515	65%	502	63%	465	58%

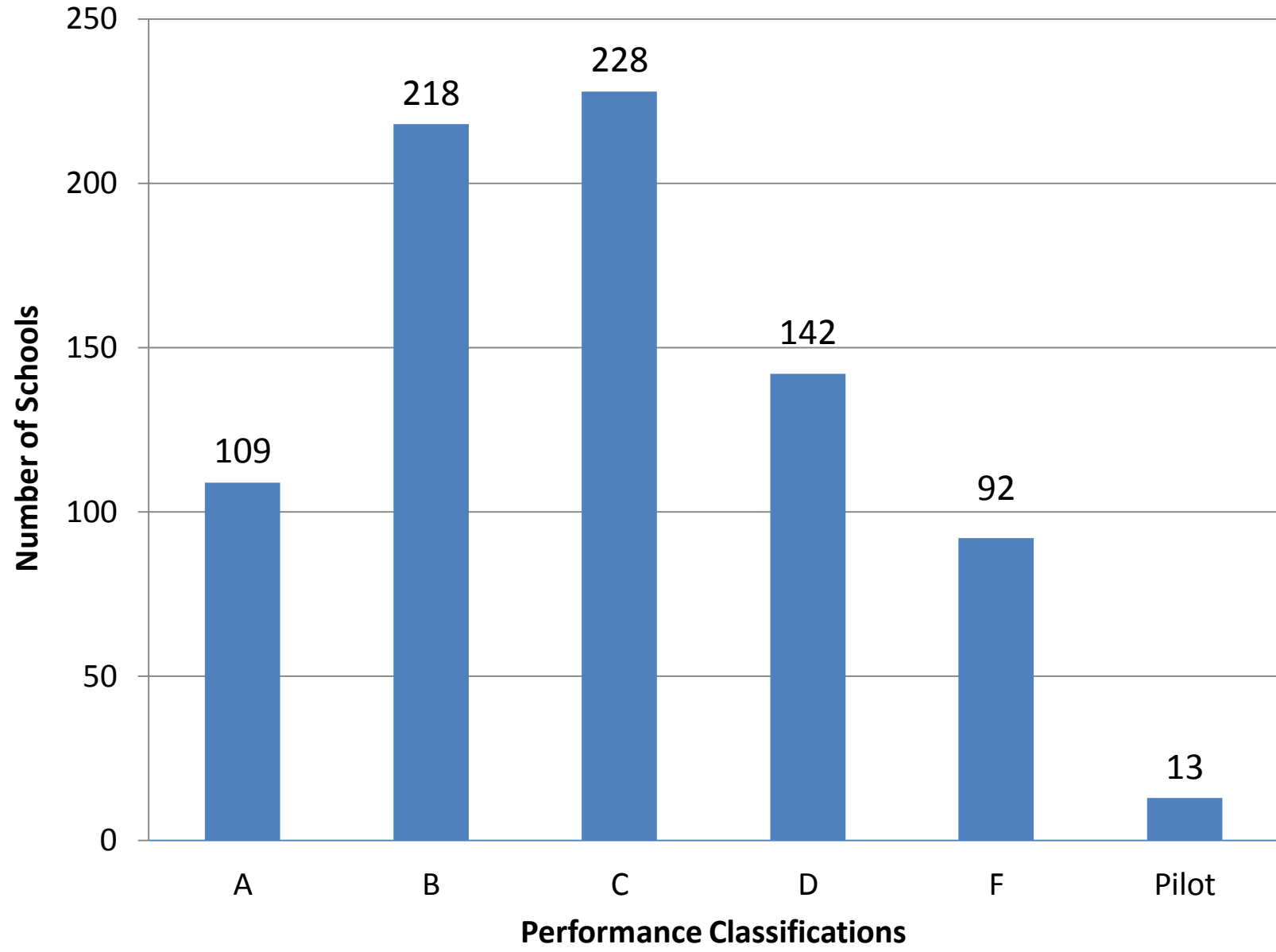
2013	Growth Not Met		Growth Met	
QDI	Number	Percent	Number	Percent
200-300	9	1%	102	13%
166-199	56	7%	210	26%
133-165	114	14%	174	22%
100-132	92	12%	28	3%
0-99	3	1%	1	1%
Totals	274	35%	515	65%

Excellence for All Districts and Schools are not included in the growth status counts or percentages above.

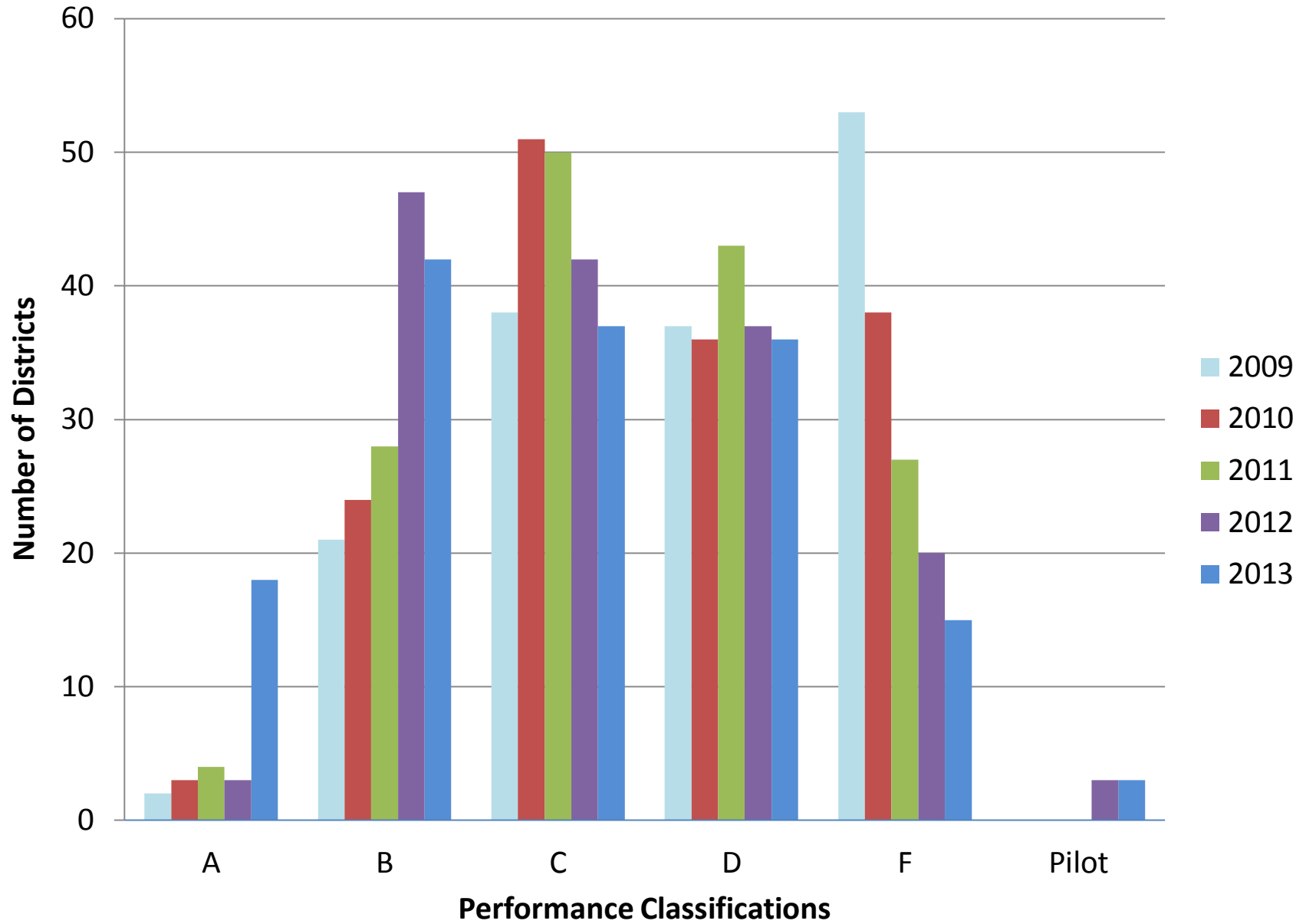
2013 District Performance Classifications



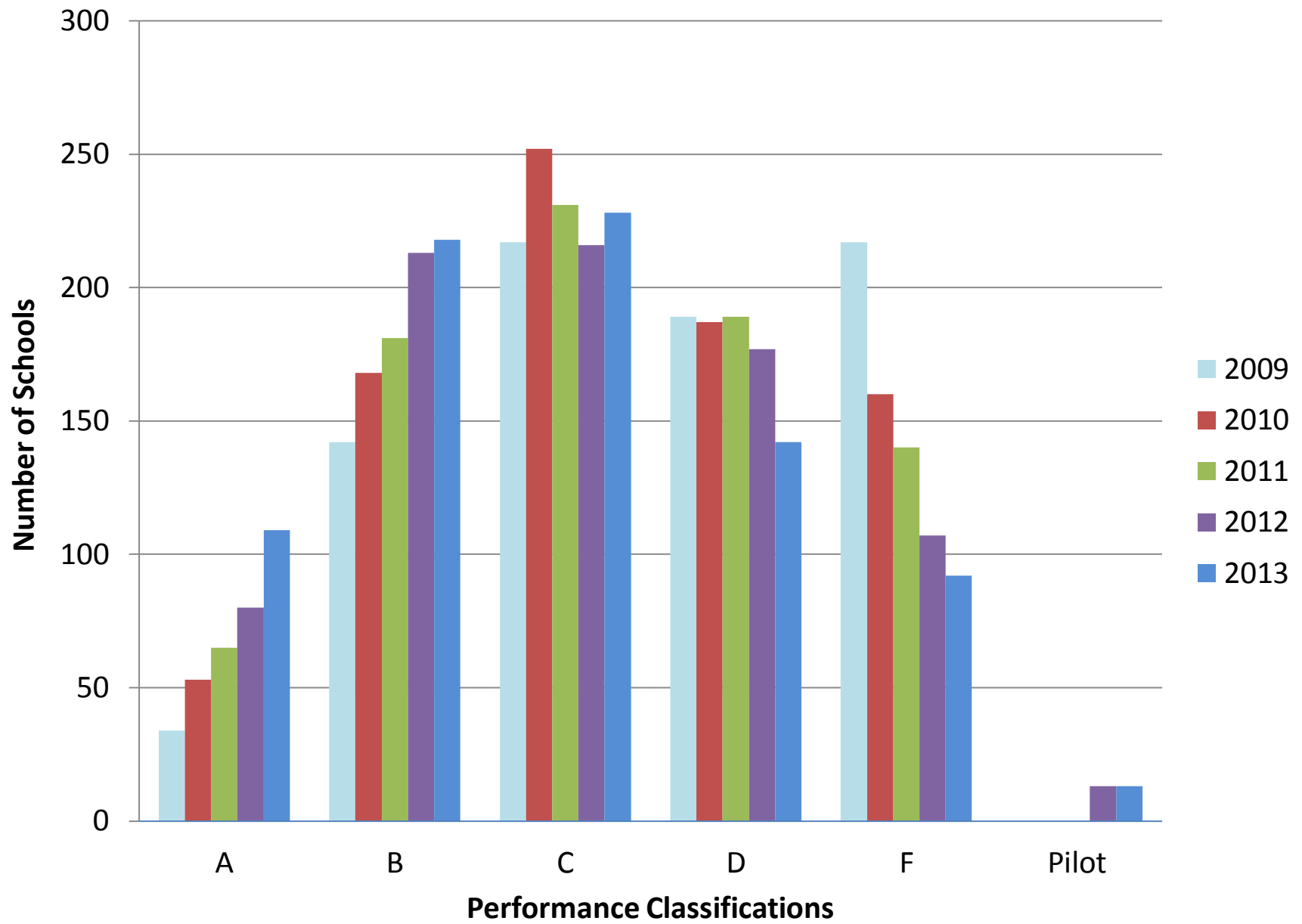
2013 School Performance Classifications



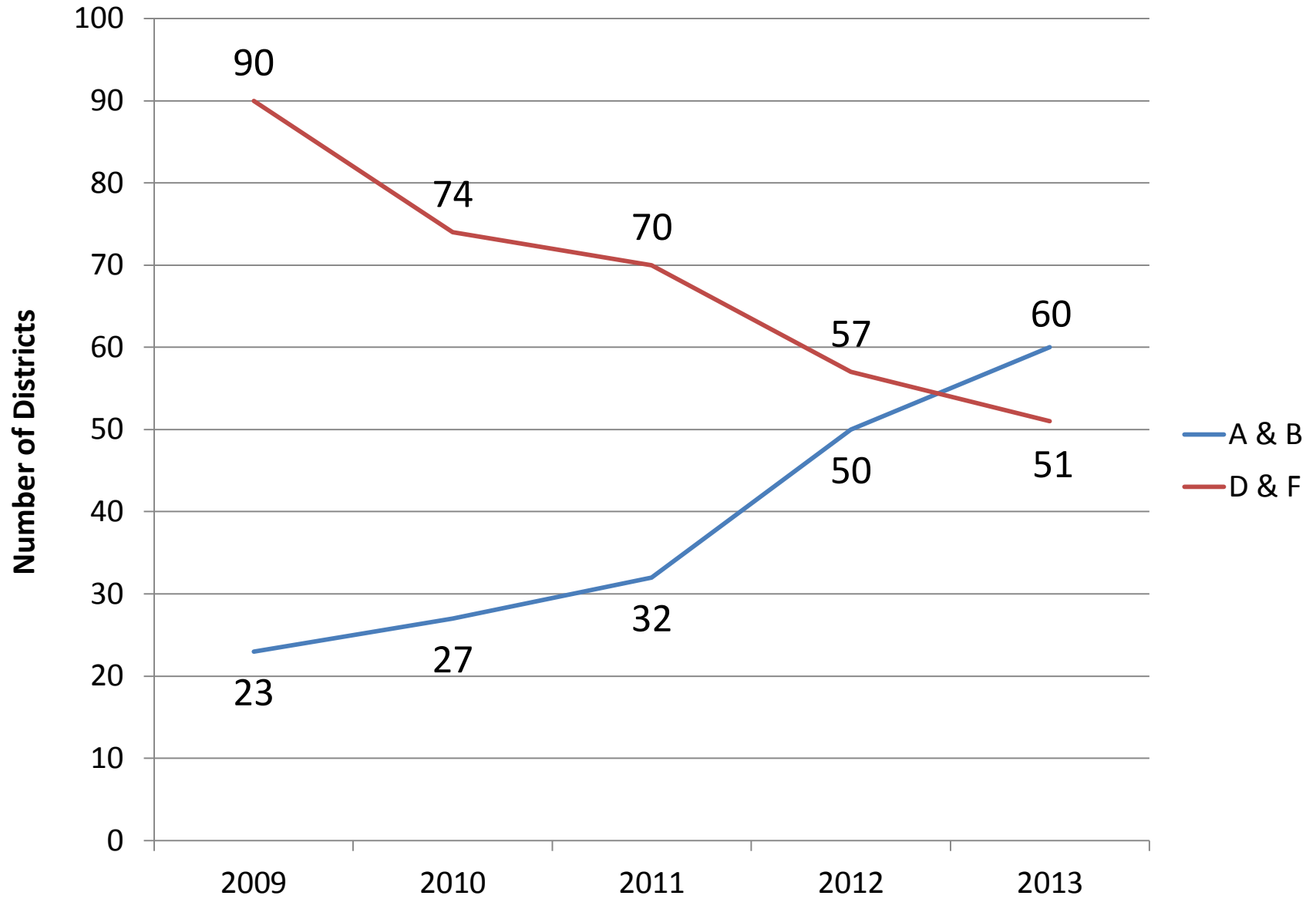
District Performance Classifications (2009 – 2013)



School Performance Classifications (2009 – 2013)

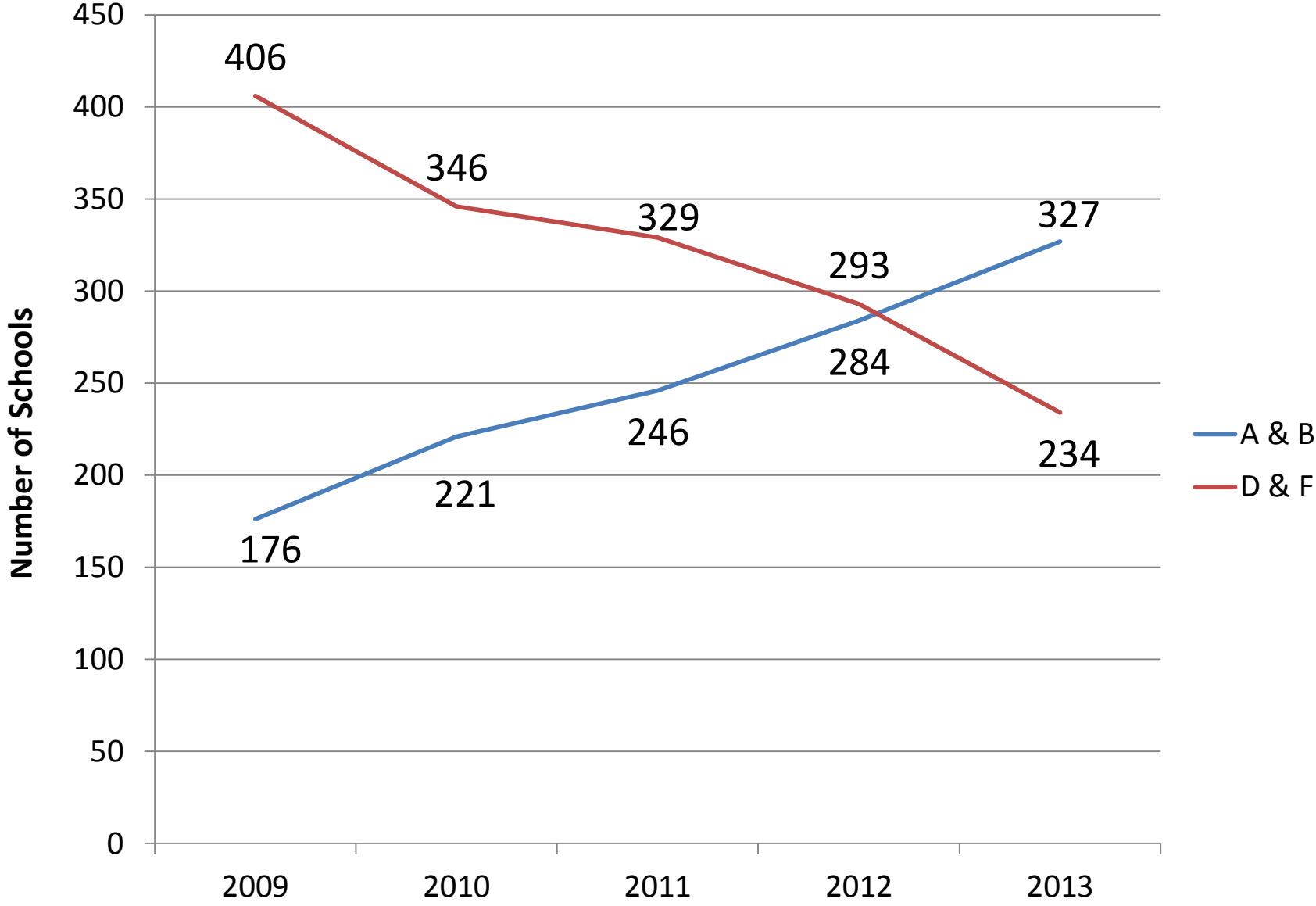


District Letter Grade Counts (2009 – 2013)



Excellence for All Districts are not included in the grade counts above.

School Letter Grade Counts (2009 – 2013)



Excellence for All Schools are not included in the grade counts above.

Changes in Grade-Levels 2012 vs. 2013

Districts						
	2013					
2012	A	B	C	D	F	Total
A	3	0	0	0	0	3
B	15	30	1	1	0	47
C	0	10	16	16	0	42
D	0	2	16	13	6	37
F	0	0	4	6	9	19
Total:	18	42	37	36	15	148

53 districts improved at least one grade-level.

24 districts dropped at least one grade-level.

71 districts had no change in grade-level.

Note: Excellence for All districts are excluded because no grade classifications were assigned to those districts in 2012.

Schools						
	2013					
2012	A	B	C	D	F	
A	68	7	3	0	0	78
B	37	136	30	5	0	208
C	3	55	105	38	13	214
D	1	14	70	62	24	171
F	0	1	19	34	50	104
	109	213	227	139	87	775

234 schools improved at least one grade-level.

120 schools dropped at least one grade-level.

421 schools had no change in grade-level.

Note: Schools with no grade classification for either 2012 or 2013 and East Kemper Attendance are excluded.